



GV-IO 12-OUT CARD

Specification	
Relay Output	12
Relay Status	Normal Open
Relay Capacitance	DC 2A / 30V; 0.25A / 250V AC
Relay On Time	4 ms
Relay Off Time	4 ms
DC In	DC 5V, 1A
Dimension (mm)	107 (W) x 99 (H)



GV-IO 12-IN CARD

Specification	
Input	12
Input Signal	DC 0-5V
High State	5V
Low State	0V
Dimension (mm)	64 (W) x 99 (H)



GV-HUB

Specification	
Serial Interface	RS-232
Signal:	DCD, RxD, TxD, DTR, GND, DSR, RTS, CTS
Connector:	4 x DB9 Male (A, B, C, D)
RS-485	Signal: D+, D-, GND
Connector:	4 x Terminal Block (A, B, C, D)
Serial Line Protection	16 KV ESD for All Signals
USB	Compliance: USB 1.1, 1.0
	USB 2.0 Backward Compatible
	Speed: Full Speed 12 Mbps
Communication	Parity: None, Even, Odd
	Data Bit: 7, 8
	Stop Bit: 1 (Default), 2
	Flow Control: RTS / CTS, XON / XOFF
	Speed: 600 bps to 115200 bps
Dimension (mm)	103 (W) x 30 (H) x 125 (D)



GV-NET/IO CARD

GV-NET CARD (without I/O function)

Specification	
Communication	1200-19200 bps
Relay Output	4, Off Time 4ms
Input	4
DC In	DC 5V, 1A
Dimension (mm)	88 (W) x 99 (H) / 63 (W) x 99 (H)



GV-DATA CAPTURE V2

Specification		
Input	DB9 Female	RS-232
	DB25 Male	RS-232
Output	DB9 Male	RS-232
	DB25 Female	RS-232
	DB9 Female	RS-232 to DVR
	RS-485+	Connect to GV-NET / GV-Hub RS-485+
	RS-485-	Connect to GV-NET / GV-Hub RS-485+
Dimension (mm)	161 (W) x 123 (H) x 34 (D)	



GV-KEYBOARD

Specification	
Output	RS-232 to PC DB9 Female
	USB USB 1.1
	RS-485+ Connects to GV-NET or GV-NET card RS-485+
	RS-485- Connects to GV-NET or GV-NET card RS-485-
Communication	RS-232 9600 bps
	RS-485 9600 bps
Power	DC In DC 12V 1A
	RS-485 DC 12V
Dimension (mm)	300 (W) x 45 (H) x 161 (D)



GV-IR REMOTE CONTROL

Specification	
Operation Distance	7 Meters
Receiving Angle	± 30 Degrees
Frequency	38 KHz
Power	R03 Size AAA / 1.5V
	Battery x 2 Units (Remote Control)
Dimension (mm)	53 (W) x 28 (H) x 185 (D)
	(Remote Control)

Technical Specifications							
Model	GV-250	GV-600	GV-650	GV-800	GV-1120	GV-1240	GV-1480
Video Input	1-16	4-16	4-16	4-16	8,12,16	8,16	16
Audio Input	1	1	2	4	8,12,16	8,16	16
Recording Rate	15 fps NTSC 12 fps PAL	30 fps NTSC 25 fps PAL	60 fps NTSC 50 fps PAL	120 fps NTSC 100 fps PAL	120 fps NTSC 100 fps PAL	240 fps NTSC 200 fps PAL	480 fps NTSC 400 fps PAL
Video Compression	Wavelet, MPEG-4, GeoMPEG-4						
Compression Rate	Variable, 300:1 Maximum						
Video Resolution	NTSC: 720 x 480, 720 x 480 De-interlace, 720 x 240, 640 x 480, 640 x 480 De-interlace, 640 x 240, 320 x 240 PAL: 720 x 576, 720 x 576 De-interlace, 720 x 288, 640 x 480, 640 x 480 De-interlace, 640 x 240, 320 x 240						
Video Signal Type	NTSC, PAL						
Networking	TCP / IP, LAN, WAN, Internet, Modem Dial-up, Modem-to-Modem, ISDN						
Backup Device	HDD, NAS, CD-R / R-W, DVD±R / ±RW, DVD±R (DL), ZIP, JAZ						
PTZ Control Protocol Support	Ademco Jupiter, Canon VC-C3 / VC-C4, Dong Yang DOH-240, DynaColor D-7720 / 7722, Kalatel CyberDome, Lilin PIH, Panasonic WV-CS850 / 854, Pelco Spectra D-protocol / P-protocol, Samsung SCC-641 / 643, Samsung SPD-1600, Sensormatic Ultra IV, Sony DVI-D100, SAE DR-E588, Kenko DMP23H1, Directed Perception PTU-D46, Kampro K-ZC23, Chiper CPT-V9KRV, Minking Minking, Minking Yaan, GANZ ZC-S122, Elbex, JEC, TOA CC551, BOSCH TC700 & TC8560, Pelco Spectra 3						
Operating System	Windows 2000, XP, Server 2003						
Language Support	Arabic, English, French, German, Hebrew, Hungarian, Japanese, Polish, Portuguese, Russian, Simplified Chinese, Spanish, Traditional Chinese						



GV-1480 COMBO CARD

Specification	
Input Type	DB15 x 2 (for Video), DB9 x 2 (for Audio)
Video Input	16
Audio Input	16
TV Output	RCA Connector x 1
Recording Rate	480 fps (NTSC), 400 fps (PAL)
Display Rate	480 fps (NTSC), 400 fps (PAL)
Dimension (mm)	195 (W) x 100 (H)



GV-HYBRID DVR CARD

Specification	
Audio Input	RCA Connector x 4
Video Resolution	NTSC: 720 x 480 30 fps / per channel PAL: 720 x 576 25 fps / per channel
Number of Channel	4
Dimension (mm)	180 (W) x 102 (H)

GV-1240 COMBO CARD

Specification	
Input Type	DB15 x 2 (for Video), DB9 x 2 (for Audio)
Video Input	8, 16
Audio Input	8, 16
TV Output	RCA Connector x 1
Recording Rate	240 fps (NTSC), 200 fps (PAL)
Display Rate	480 fps (NTSC), 400 fps (PAL)
Dimension (mm)	195 (W) x 100 (H)

GV-1120 COMBO CARD

Specification	
Input Type	DB15 x 2 (for Video), DB9 x 2 (for Audio)
Video Input	8, 12, 16
Audio Input	8, 12, 16
TV Output	RCA Connector x 1
Recording Rate	120 fps (NTSC), 100 fps (PAL)
Display Rate	480 fps (NTSC), 400 fps (PAL)
Dimension (mm)	195 (W) x 100 (H)



★ All specifications may change without prior notification.



GV-Series Surveillance System

- 480 FPS Recording Rate; 16 Audio Recording Channels
- Recording Resolution up to 720 X 480 (NTSC) and 720 x 576 (PAL)
- Screen Resolution up to 1280 x 1024
- Enhanced Network Security (RSA Encryption)
- SMS Support
- Vital Sign Monitor
- Authentication Server
- GV-IR Remote Control
- GV-Keyboard
- Hybrid DVR
- Remote Monitoring via PDA and Smartphone

GV-Series Surveillance System

V7.0.4.0 NEW FEATURES

- Supports GV-1120, GV-1240, GV-1480 Combo Card (16 channel video / audio recording and real-time display card)
- New administrative options in Password Setup for deleting files from the Video Event List and DMBackup
- ViewLog
 - Backup, Save AVI and BMP functions accessible in LAN ViewLog
 - Automatic refresh of the Video Event List in LAN ViewLog
- Remote
 - PTZ Home, Auto Focus and Auto Pan functions available in Center V2 and WebCam
 - User accounts import and export in Authentication Server

RECORDING

- Choice of recording at 15, 30, 60, 120, 240 and 480 fps
- Choice of recording includes round-the-clock, motion detection, alarm triggers and schedule mode
- Adjustable recording quality and frame rate for each camera
- Pre-motion and post-motion recording
- Supports Windows XP / Server 2003 burning software: directly burns files into CD media

AUDIO

- 16 channels of live audio streaming and recording (optional)

MONITOR VIEWING

- Dual display operation for live monitoring and ViewLog playback on two monitors
- Full screen view
- Object counting allows you to count the number of objects that pass between predefined regions
- Object tracking and zooming by PTZ domes
- Screen pop-ups on motion or alarm activation
- Keep Days: keeps video files for a set number of days
- Digital watermark on AVI files for video authentication
- GV-600 / 650 / 800 cards with the Noise Filter function to eliminate video signal interference
- Software-based De-interlace
- Higher screen resolution support of 1280 x 1024
- E-Map with an ease of user interface
- Unattended and missing object detection: highlights the locations and sends out alerts
- Windows Lockup: launches GV-desktop to lock up the Windows
- Supports 1,000 accounts for logins and passwords

NOTIFICATION

- E-mail notification with attached video images on motion and alarm activation
- E-mail or telephone notification on video lost or I/O error
- Directs PTZ dome to a preset location on motion and alarm activation
- SMS alerts available in Main System, Center V2 and Vital Sign Monitor
- Alarms on objects that pass between predefined regions

SEARCH & PLAYBACK

- Object Search: searches specific objects or motion changes within a defined area in video footage
- Index Search: searches and plays back videos of motion / alarm triggers, and POS transaction events
- Thumbnail View for ease of search for specific frames within video footage
- Object Index for a quick search in ViewLog
- Synchronized audio and video for both live and playback modes
- Video footage export within a specified period of time
- Continuous playback of set frames A to B
- EXE format export, playable with any third-party players
- AVI format export in multiple screens mode
- DVD format export for Hybrid Card format files, playable with any DVD players

WEBCAM

- SingleView: 1 and 2 screen divisions
- MultiView: 1, 4, 8 and 16 screen divisions
- User-definable Bandwidth Control ensures image transmission does not exceed the allocated bandwidth
- Remote control of PTZ domes and I/O devices
- Two-way audio communication with GV-System (receiving and broadcasting)

REMOTE PLAYBACK

- Remote access to video and audio files
- 32 channels of simultaneous remote playback
- Address Book allows to create shortcuts to frequently used system operations
- Locates files by a specific date, time or camera
- Advanced search function by a time frame and selected camera
- Data transmission bandwidth control

IT TECHNOLOGY

- RSA Network Security
- Authentication Server: central control of password settings in local GV-DVRs

CENTER V2 & CENTER V2 Pro (optional)

- Center V2 manages 5 GV-Systems and 80 channels from surveillance sites
- Center V2 Pro manages 50 GV-Systems and 800 channels from surveillance sites (optional)
- Receives live images or instant messages with attached videos to verify nature of alarms
- Responds to 13 frequent alerts from surveillance sites, e.g. motion or I/O triggers, connection lost, monitoring stops, POS abnormal transaction
- Activates alarm, output devices, E-mails or SMS to notify security operators
- Two-way audio communication
- Panic button supports for business security
- Ease of monitoring window: 1024 x 768 / 1280 x 1024 screen resolution; multiple screen divisions; dual monitor support; good video resolution
- Backup files for video evidence
- Quick search for various events from Event Log

VITAL SIGN MONITOR (optional)

- Helps IT operators monitor health status of multiple GV-Systems surveillance sites
- Instant text messages sent to VSM when any GV-System is event-triggered
- Serves as many as 1,000 GV-Systems at a time
- Activates emails, SMS alerts, alarms, output devices to get the operator's attention
- Keeps track of GV-System's server activities

DISPATCH SERVER (optional)

- Connects 25,000 GV-Systems to 500 Center V2 servers
- Distributes the workload between online and offline Center V2 servers
- Forwards requests from event-triggered GV-Systems evenly across a Center V2 server farm
- Two-way audio communication
- Creates groups and sub-groups of Center V2 servers
- Views real-time Center V2 events
- Quick search and remote playback of Center V2 video/ audio attachments

POS INTEGRATION (GV-Data Capture V2 required)

- POS video text overlay displays text messages onto live monitoring screen and video files
- Compatible with up to 4 POS devices
- POS Field Filter displays transaction events filtered by defined conditions
- POS event search by transaction keyword and transaction type
- Activates recording when transaction starts
- Transaction data is stored in a database file (Microsoft Access format) on GV-DVR system, applicable to the retroactive analyses or reports
- Adjustable on-screen font type, text color, text background color and text alignment
- Abnormal transaction alarm
- Cash drawer opening record
- POS codepage mapping supports special characters and symbols display



Unattended / Missing Object Detection



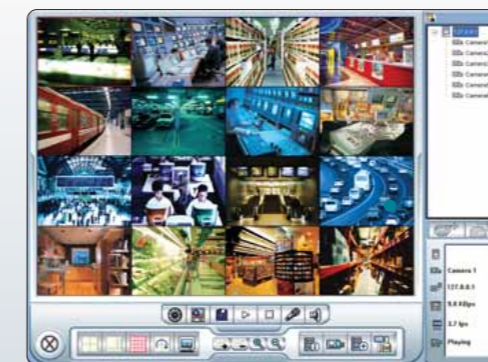
ViewLog



E-Map



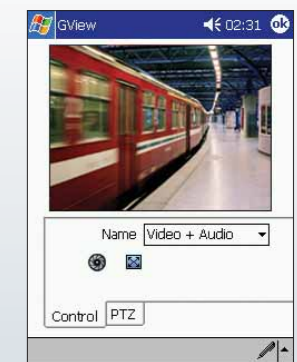
POS



WebCam MultiView



Center V2



Live View for PDA and Smartphone